



PRODUCT SPECIFICATION GUIDE





BEAUTIFUL FUNCTIONAL EASY TO INSTALL

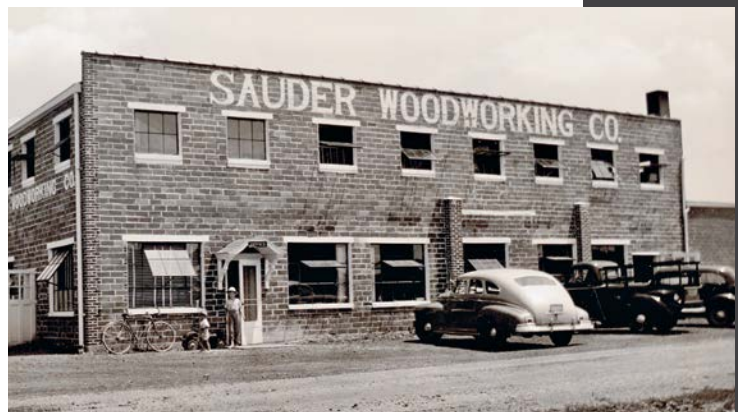
ECO-FRIENDLY

Sauder was founded on the principles of stewardship and servanthood. Three generations later, our family continues to honor these values with environmentally responsible processes that endeavor to preserve the future of our world. Sauder Cabinetry is no exception – manufactured in the US with integrity and craftsmanship.

TABLE OF CONTENTS

04.	WHY CHOOSE SAUDER	29.	OVEN CABINETS
05.	DETAILS Design and Ordering KCMA Tested	30.	LINEN CABINETS
06.	CABINET SPECS	31.	UTILITY CABINETS
09.	CONSTRUCTION SPECS	32.	VANITY CABINETS Vanity Sink Base / Double Door Vanity Sink Drawer & Door Base Vanity Sink Drawer Base Vanity Base Vanity Drawer Base Combo Vanity Cabinets
10.	CABINET DIMENSIONS	36.	CABINETS ONLY No Fronts Option
12.	BASE CABINETS Base Base Double Door Base Full Height Door Base Full Height Double Door Drawer Base / Knee Base Tray Base / Sink Base Microwave Base / Easy Reach Corner Base Blind Corner Base	36.	ADA COMPLIANT CABINETS
18.	WALL CABINETS Wall 12" High Wall 15" High Wall 18" High Wall 21" High Wall 24" High Wall 30" High Single Door / Double Door Wall 36" High Single Door / Double Door Wall 42" High Single Door / Double Door Blind Wall Wall Diagonal Cabinet Wall Microwave Cabinet	40.	ACCESSORIES
		47.	MODIFICATIONS
		48.	CARE & CLEANING
		49.	INSTALLATION
		50.	WARRANTY

WHY CHOOSE SAUDER?



ABOUT OUR COMPANY

For over 85 years, we've been making furniture with the same integrity, craftsmanship, and care. Sauder is a family owned (third-generation) company based in Archbold, Ohio. With some of the most technologically advanced equipment in the world, our facility (located on the same site pictured above circa 1937) features nearly 4 million square feet of manufacturing space, 1.2 million square feet of warehouse space, and employs about 2,000 workers. We pride ourselves on excellent customer service and fast turn-around time – only a 14 day lead time on standard cabinets.

SAUDER CABINETS DETAILS



DESIGN

Sauder Cabinetry can be priced and designed in the industry-leading 2020 Design software. Visit saudercabinetry.com to download our 2020 Design catalog. *2020 Design License required for use.*



ANSI/KCMA A161.1



KITCHEN CABINET MANUFACTURERS ASSOCIATION.
ENVIRONMENTAL STEWARDSHIP PROGRAM (ESP).
ALL PRODUCTS IMPACT THE ENVIRONMENT
FOR ESP PROGRAM CRITERIA, VISIT KCMA.ORG

KCMA TESTED

KCMA does your homework for you. Our cabinets passed the toughest tests of durability and performance in the marketplace today and have earned the prestigious KCMA Certification Seal.

KCMA ENVIRONMENTAL STEWARDSHIP CERTIFICATION

At Sauder, we support and encourage responsible forest management practices that promote sustainability and result in long-term economic and environmental benefits. The KCMA Environmental Stewardship Certification proves our commitment to the intelligent use of our natural resources.

ORDERING

ONLINE DEALER PORTAL

Sauder's online Dealer Portal allows customers to place orders, track shipments, lookup invoices, download our 2020 Design catalog, and other marketing and specification details. New customers will be given a login at the time accounts are setup.

SET UP AN ACCOUNT

Work with your local sales rep or contact us at saudercabinetry@sauder.com or **(419) 446-3429** to set up an account.

EMAIL ORDERS

Email saudercabinetry@sauder.com. Email orders can be accepted 24 hours a day; however, email orders received after 3:00PM will not be processed until the next business day.

When submitting email orders, Sauder Cabinetry prefers the following formats:

- 20/20 generated CSV output
- Provided Microsoft Excel® form

FAX ORDERS

Fax orders to (419) 446-4911.

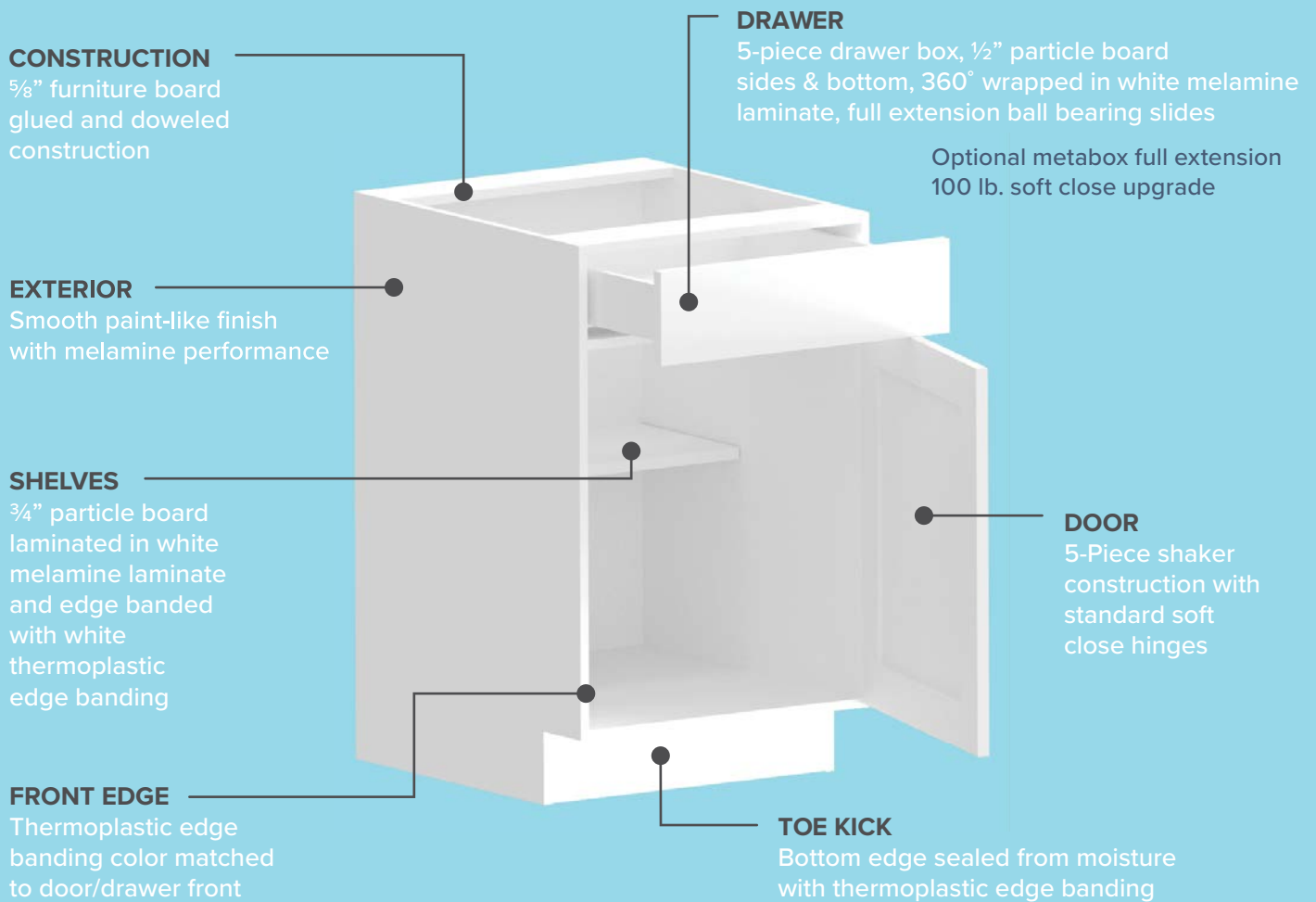
SHIPPING

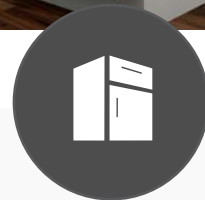
Cabinets ship fully assembled and ready for install. Freight can be arranged by the customer or by Sauder Cabinetry.

HIGH QUALITY CABINETS

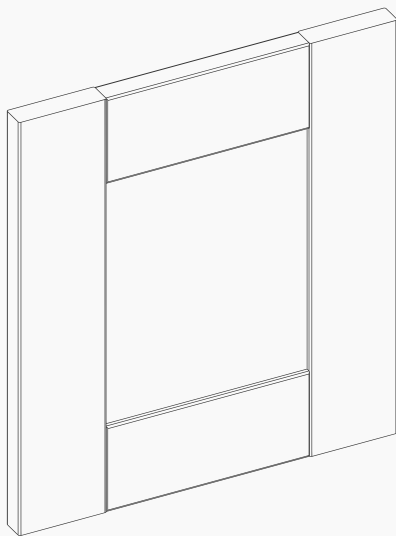
We took more than 85 years of manufacturing and furniture experience and developed a high quality, full access cabinet with premium details not found in other similarly priced cabinets. This means more finished edges, fewer visible seams, and a smooth topcoated laminate finish with the appearance of a painted cabinet. In addition, KCMA's rigorous, in-laboratory compliance program measures the integrity of our cabinets through tests covering cabinet structure, door and drawer operation, and cabinetry finish.

CABINET DETAILS

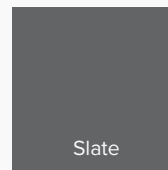
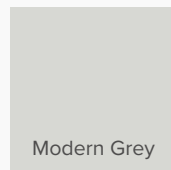




SHAKER DOOR OPTIONS



All doors feature 5-piece shaker construction and are made from MDI MDF substrate, making them moisture resistant and durable. Door and drawer fronts are 360° wrapped with melamine laminate.



Extended Lead Time

STANDARD CABINET DIMENSIONS

WALL CABINETS	12" Depth	12" / 15" / 18" / 21" / 30" / 36" / 42" Height
BASE CABINETS	24" Depth	34 ½" Height
LINEN CABINETS	21" Depth	84" Height
UTILITY CABINETS	24" Depth	84" / 90" / 96" Height
VANITY CABINETS	21" Depth	34 ½" Height

COLOR

GLACIER WHITE



SLATE

Extended Lead Time



MODERN GRAY

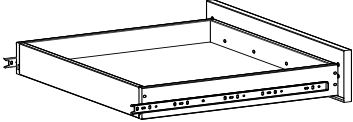
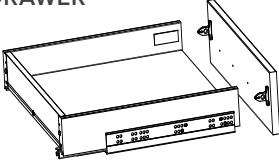


CONSTRUCTION SPECIFICATIONS

FRAMELESS CONSTRUCTION

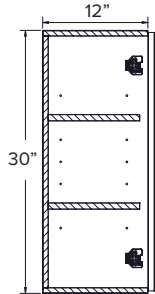
All cabinets are frameless, with full access and full overlay styling. Panels and rail components are joined with engineered dowels, glue, screws or a combination of those components appropriate to the typical use of the cabinet. All frameless case construction is made from commercial grade furniture board with laminated, water resistant surfaces.

CABINET CONSTRUCTION	
Back	5/8" furniture board; melamine laminate
Side Panels	5/8" furniture board; melamine laminate exterior and front edge color matched to door, white interior
Top/Bottom	5/8" furniture board; melamine laminate exterior and front edge color matched to door, white interior
Stretcher	5/8" furniture board; melamine laminate
Toe Kick	5/8" furniture board; melamine laminate
Shelves	Half depth adjustable 3/4" furniture board; melamine laminate
Hinges	6 way adjustable, fully concealed soft close steel hinges
Interior	White melamine laminate finish

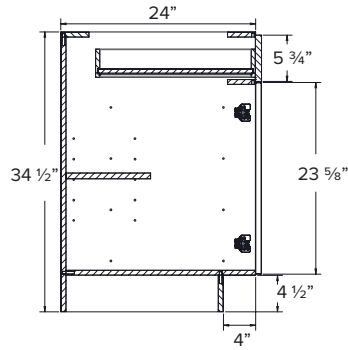
DRAWER CONSTRUCTION		
	STANDARD DRAWER	UPGRADED DRAWER
		
Guides	Full extension ball bearing, side mount, 50 lb rating	Soft close, full extension, undermount, 100 lb rating
Sides	1/2" furniture board; melamine laminate, screwed	Formed metal sides
Bottom	1/2" furniture board; melamine laminate, captured in a groove, glued from underneath	5/8" furniture board; melamine laminate, dowel and screwed
Back	1/2" furniture board; melamine laminate, screwed	5/8" furniture board, melamine laminate, dowel and screwed
Drawer Front	Separate, attached with wafer screws	Integrated, attached with snap-in clips
Adjustment	Adjustable via wafer screws	Adjustable snap in clips

CABINET DIMENSIONS

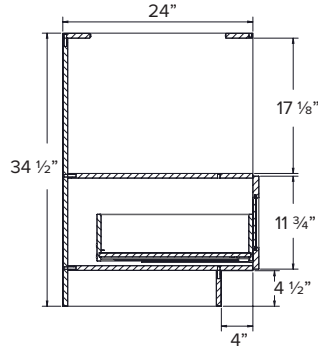
WALL CABINET



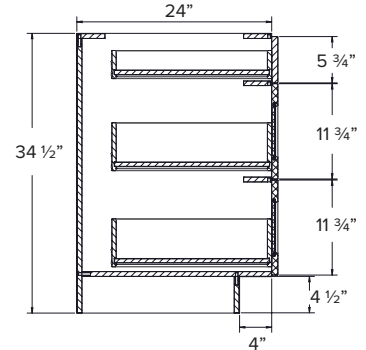
BASE CABINET



MICROWAVE BASE CABINET

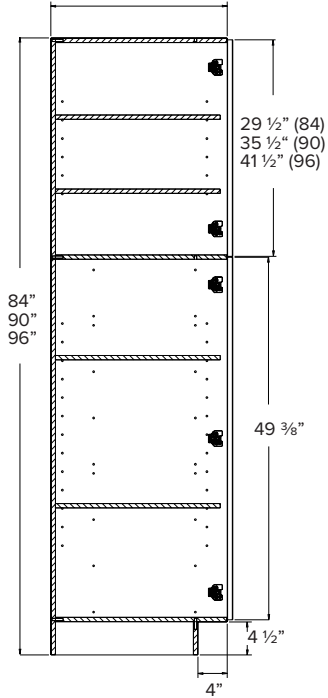


DRAWER BASE CABINET

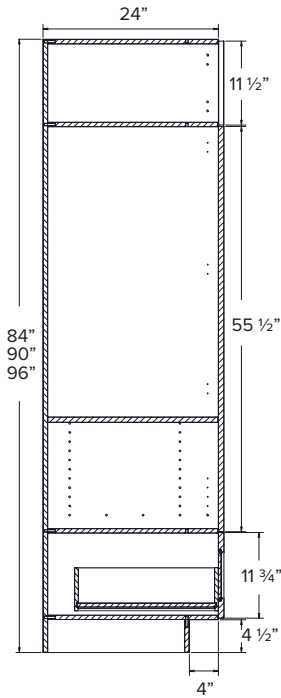


TALL CABINET

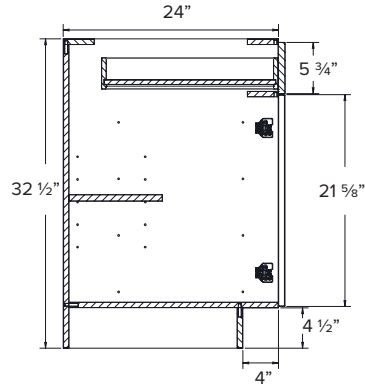
UC - 24" / LC - 21"



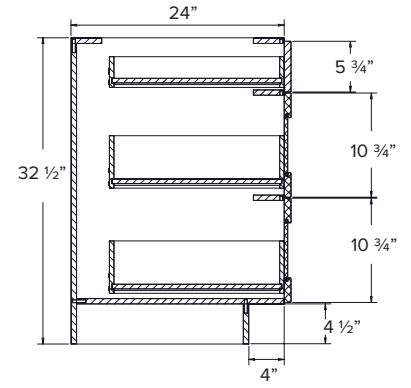
OVEN CABINET



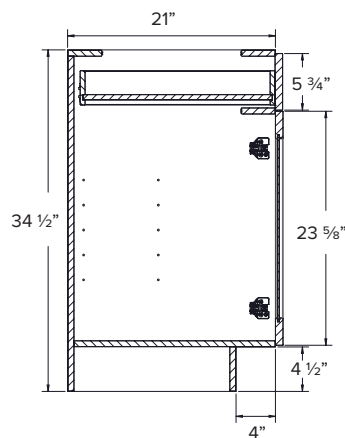
ADA BASE CABINET



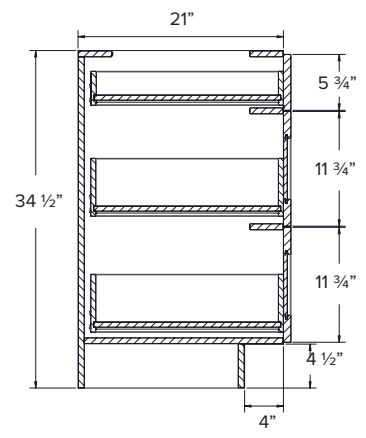
ADA DRAWER BASE CABINET



VANITY BASE CABINET



VANITY DRAWER BASE CABINET



• ADA Height 32.5"H Vanity Base Cabinets also available

